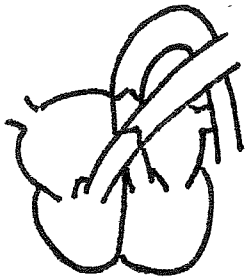


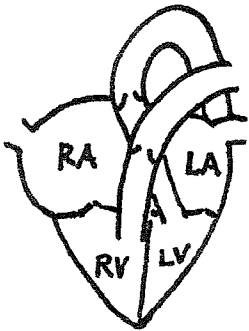
CARDIOVASCULAR PHYSIOLOGY



① VENTRICULAR FILLING

- AV valves -
- SL valves -

End Diastolic Volume



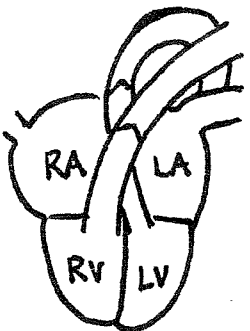
② VENTRICULAR SYSTOLE

- Isovolumetric contraction: ALL valves _____

End Systolic Volume

- Ventricular Ejection

- AV valves
- SL valves



③ ISOVOLUMETRIC RELAXATION

ALL valves _____