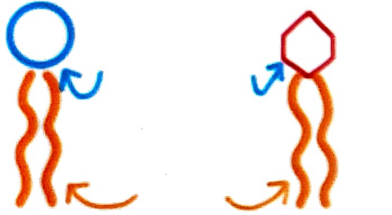


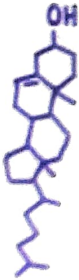
CELL MEMBRANE STRUCTURE

Most Common Membrane Lipids



Fatty acid tails are saturated or unsaturated

Cholesterol

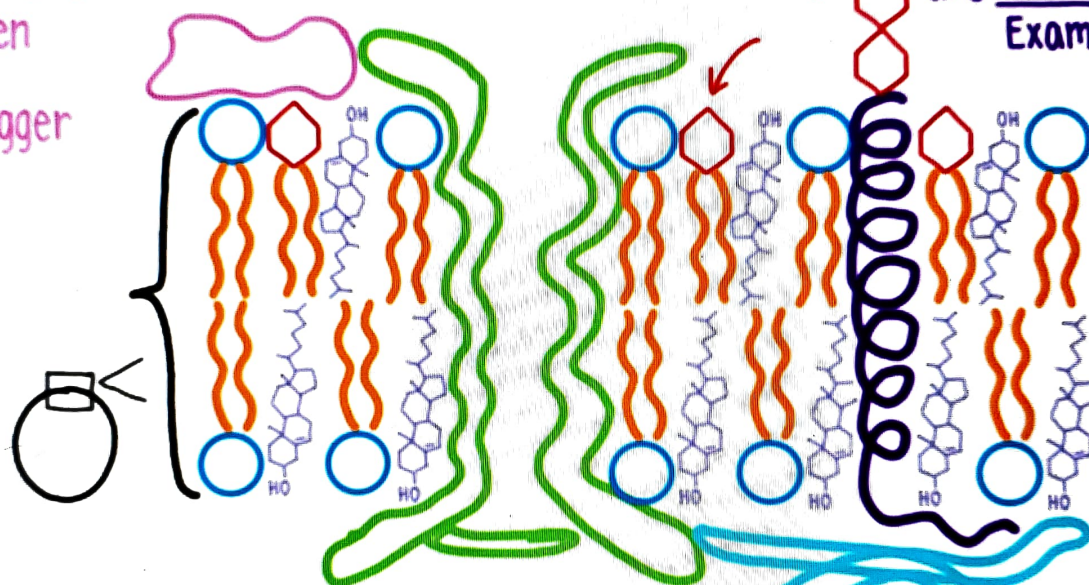


Organizes where the and are located

by packing in between other lipids

Proteins open trigger

or and



: Cell Identifiers

are Examples:

Select for substances based on

Some have

Some are

Note: freely;

Thin Cytoskeletal Filaments that give the cell its shape

and diffuse

